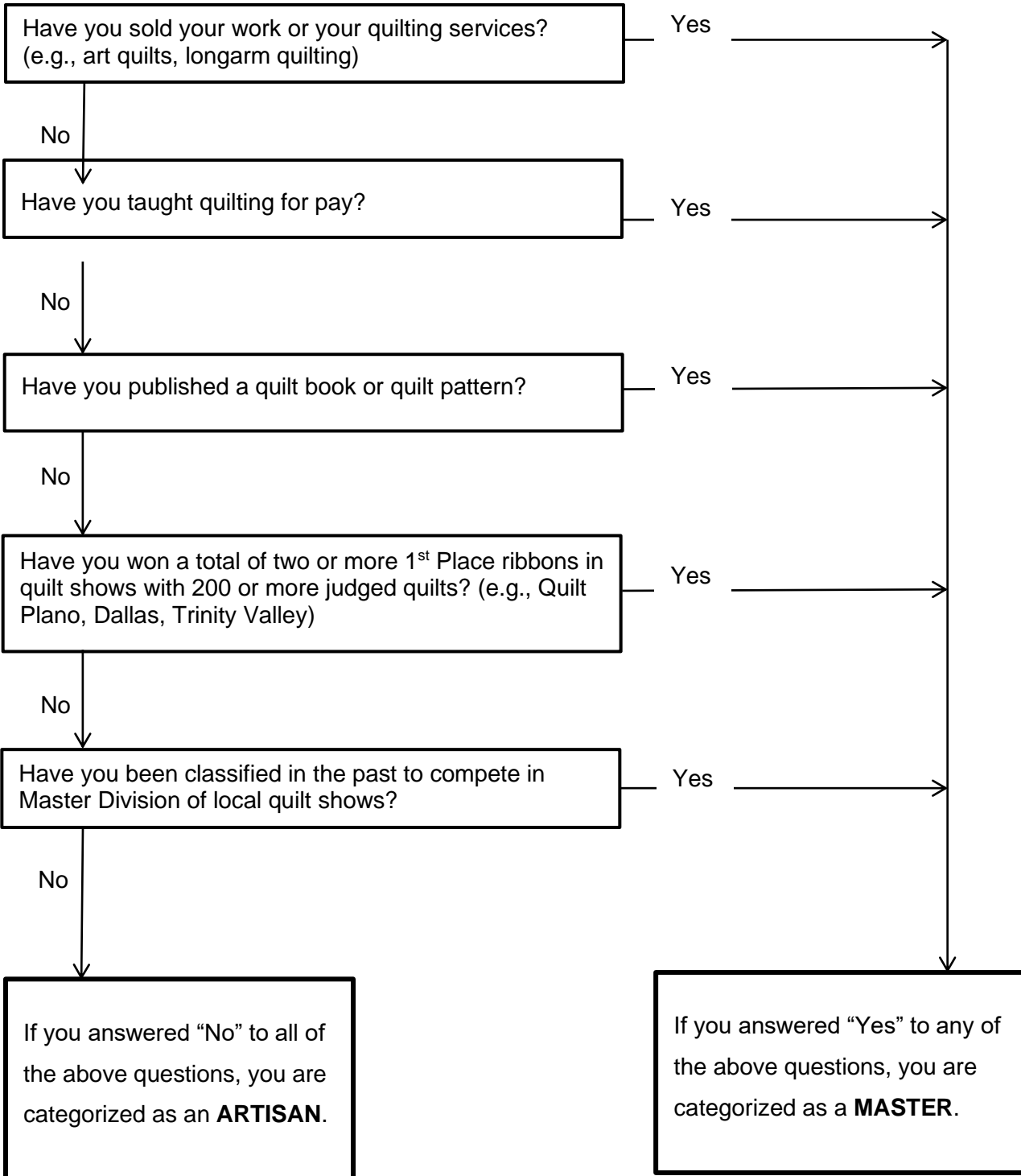


Are You an “Artisan” or a “Master”?

Use this flowchart to determine whether your entry belongs in a Master category or an Artisan category. The choice is determined by the eligibility of the “maker,” the person who constructed the quilt top. Open and Non-Judged categories are open to all entrants, regardless of Master or Artisan eligibility.



Categories: Choose the category that best describes your quilt.

101 – Master, One-Person, Pieced, Medium
102 – Master, One-Person, Pieced, Large
103 – Master, One-Person, Appliqued, Medium/Large
104 – Master, One/Two-Person, Mixed Techniques
105 – Master, Two-Person, Pieced, Medium
106 – Master, Two-Person, Pieced, Large
107 – Master, Two-Person, Appliqued, Medium
108 – Master, Two-Person, Appliqued, Large
109 – Master, Art Quilt

201 – Artisan, One-Person, Pieced, Medium
202 – Artisan, One-Person, Pieced, Large
203 – Artisan, One-Person, Appliqued, Medium/Large
204 – Artisan, One/Two-Person, Mixed Techniques
205 – Artisan, Two-Person, Pieced, Medium
206 – Artisan, Two-Person, Pieced, Large
207 – Artisan, Two-Person, Pieced, Extra Large
208 – Artisan, Two-Person, Appliqued, Medium
209 – Artisan, Two-Person, Appliqued, Large
210 – Artisan, Art Quilt
211 – Artisan, First Show Quilt by the Top Maker
212 – Artisan, Youth

301 – Open, Miniature
302 – Open, Small
303 – Open, Group, Medium/Large
305 – Open, Digitized, Medium
306 – Open, Digitized, Large
307 – Open, Other Techniques
308 – Open, Modern Quilt

400 – Open, Non-judged

The Show Committee reserves the right to determine the correct category for a quilt and to re-organize the categories to facilitate judging.

Size guidelines:

(See definitions on page 2 of Registration Information document.)

<= 24" – Miniature (restrictions apply)

<= 30" – Small

<= 72" – Medium

> 72" – Large

> 90" – Extra Large

For questions, additional information, or shipping instructions, please call or email

Registration Chair – Tisha Harms showregistration@ggplano.org or 214-316-5066 (cell)