



Quilt Plano 2026

August 14-15, 2026



Quilt Registration Information

Registration Deadline – June 11, 2026

General Requirements:

- All quilts entered in judged categories must have been completed within the last two years and may not have been entered for judging in any previous Quilt Plano show.
- Clothing, soft sculpture, un-quilted tops, and cheater blocks will not be accepted. Tied quilts will be accepted **ONLY** in the Youth category (214) or the Non-Judged category (400).
- Quilts must remain on display for the entire show – **NO** early releases. Quilts must be clean and in good condition, free of animal hair and smoke.
- Maximum number of quilts that may be entered per person is 4. Only one of those entries may be entered in the “211 – Artisan, First Show Quilt by the Top Maker” category and only one of those entered may be entered in the “500 - Master, Artisan, Youth, Celebrate America 250!” category.
- The Show Committee may limit the number of entries per person due to space limitations or inappropriate content.
- **Sleeve** – Quilts in the Miniature category (301) or Small category (302) may use a 2” finished sleeve. **Quilts of Valor in the Celebrate America 250! Category will not have a sleeve.** All others must have a 4” finished sleeve. All sleeves should be stitched down on both long edges. Entries without properly applied sleeves will not be accepted. If your quilt is less than 90” on the longest side, only one sleeve is required. If your quilt is longer than 90”, a sleeve should be placed at the top of the quilt and the top of a second sleeve is to be placed 86” from the bottom of the quilt, to ensure that the quilt will not touch the floor when on display. The quilt will be hung from the top sleeve for judging, then moved to the lower sleeve for display during the show.
- **Label** –The quilt label should include the name of the quilt, the top makers names and the quilters name. Labels are to be sewn in the lower left-hand corner, looking at the back of the quilt. Entries without labels will not be accepted.

Fees:

- Quilters Guild of Plano Members
No Fee if submitted **before May 14, 2026**
\$20.00 per quilt if submitted from **May 15 to June 11, 2026**
- Non-Members
\$15.00 per quilt if submitted online before **May 14, 2026**
\$35.00 per quilt submitted from **May 15 to June 11, 2026**
- Youth category (214) – **No Fee**

Entry fees are non-refundable.

Items to Include:

- **Entry form** – Entry Form must be completed online at: www.qgplano.org/quilt-entries/
- **Color photo** – A photo of the completed quilt top (need not be quilted for the photo) must be uploaded when you complete the entry process online. This must be a photo of the actual top. The photo should be at least 4”x6” and 350 dpi. Accepted file types: jpg, jpeg, png, pdf, heic, Max. file size: 5 MB.

If you would like your quilt to be considered for display as a two-sided quilt, upload photos of both the front and back.

Judging and Awards:

- All quilts except those entered in the non-judged category will receive a judge’s critique free of charge. The number and type of ribbons awarded in each category are at the discretion of the Judges. Judges award a ribbon to the quilt, not the maker(s); therefore, there will be only one ribbon per award in two-person and group categories. **Merit quilting prizes are awarded to the quilter, who is not necessarily the entrant or top maker.**
- Cash prizes will be awarded to the following ribbon winners:

Quilt Plano 2026 Awards	
Ribbon Award	Cash Prize
Best of Show	\$75.00
First Place	\$75.00
Second Place	\$50.00
Third Place	\$25.00
Honorable Mention	no cash prize
Merit Hand Quilting	\$100.00
Merit Machine Quilting	\$100.00
Judges Choice (2)	\$60.00
NACQJ Award of Merit (2)	no cash prize
Mayor’s Choice	\$60.00
Member’s Choice	\$60.00
Viewer’s Choice	\$60.00

Celebrate America 250! Category Awards	
Ribbon Award	Cash Prize
First Place	\$75.00
Second Place	\$50.00
Third Place	\$25.00
Honorable Mention	no cash prize
President’s Choice	\$25.00
Regent’s Choice (3)	\$25.00
Mayor’s Choice	\$25.00
Best of Category: Celebration	\$25.00
Best of Category: Quilt of Valor	\$25.00
Best of Category: Historical	\$25.00
Best of Category: Creativity	\$25.00

Notes for the Entry Form:

- **Measurements of Quilt** – Width (side to side) and length (top to bottom) as it is to be hung. For example, a pictorial quilt that is to be hung horizontally might have its longer side as the width.
- **Two-sided Quilt** – A two-sided, or reversible, quilt has a distinctive design on the back – typically just as worthy of display as the front of the quilt. (A pieced back does not necessarily make it a two-sided quilt.) Space permitting, we will hang two-sided quilts so that both sides may be seen.
- **Quilt top construction technique** – Indicate the primary method of constructing the quilt top.
- **Quilting technique** – This is the method by which most of the quilting, or the most prominent quilting, is done. For example, if you quilt in the ditch around blocks using your home machine, but hand quilt prominent designs within the blocks, it should be considered hand quilted.
- **Design** – Please list the book or pattern used to make your quilt so that the designer may get credit for his/her work. If you make up your own design, or if you use a traditional block and design an original setting not taken from someone else’s work, then it is considered an original design.
- **Master/Artisan** – The choice between Master and Artisan categories is determined by the eligibility of the “maker,” the person who constructed the quilt top. See the flowchart below to determine which set of categories is appropriate. Open and Non-Judged categories are open to all entrants, both Master and Artisan.

Definitions:

- **One-person quilt** – A quilt constructed entirely by one person. This includes cutting, piecing, applique, embellishment, quilting, and binding. A quilt that has been professionally quilted or bound by someone else may not be entered in a one-person category. In addition, quilts made from pre-cut kits and quilts using pre-cut applique may not be entered in a one-person category.
- **Two-person quilt** – A quilt in which two people have contributed to the completion of the quilt, e.g., one person made the top and a second person did the quilting.
- **Group quilt** – A quilt in which three or more people, including the quilter, have contributed to the completion of the quilt. Block exchanges and round robins usually belong in this category.
- **Miniature quilt** – (A one-person or two-person quilt) A quilt in which the pattern is that of a large quilt, but every element has been reduced in scale. Pieced or appliqued blocks are to be no more than 4” on a side, and the entire quilt is to be no more than 24” on any side. A quilt that does not have blocks, such as a wholecloth quilt or a lone star quilt, can be a Miniature if all design elements of the quilt are in the appropriate miniature proportions. See also Small Quilt.
- **Small quilt** – (A one-person or two-person quilt) A quilt that is less than or equal to 30” on the longest side. Any technique may be used. Quilts that are less than or equal to 24” on a side but that do not fit the definition of a Miniature Quilt belong in this category, e.g., small one-block pictorial quilts.
- **Medium quilt** – A quilt that is more than 30” and less than or equal to 72” on the longest side.
- **Large quilt** – A quilt that is more than 72” on the longest side.
- **Extra-large quilt** – A quilt that is more than 90” on the longest side.
- **Art quilt** – (A one-person or two-person quilt) A quilt that is made from an original design and includes a significant amount of non-traditional techniques or materials as a major design element, e.g., painting, piecing or applique from an original photo.
- **Modern quilt** – (One-person or two-person quilt). A quilt inspired by modern design. Minimalism asymmetry, expansive negative space and alternate grid work are often part of composition, as are improvisational piecing, high contrast and many solid-colored fabrics. At least one side is larger than 30”.
- **First show quilt** – (A one-person or two-person quilt) The first quilt entered in a show by the top maker (not the quilter).
- **Youth quilt** – A quilt constructed, quilted, and bound by a person 17 years old or younger. Assistance by an adult is acceptable, but all the work must have been done by the entrant.
- **Digitized** – (A one-person or two-person quilt) A quilt with embroidered or appliqued blocks produced from a pre-programmed design on an embroidery machine. (Quilts that are longarm quilted with a digitized design are not included in this category unless the top is constructed from digitized designs.)
- **Mixed techniques** – (A one-person or two-person quilt) A quilt that is constructed using substantial or approximately equal amounts of at least two different techniques. For example, a quilt with half the blocks pieced and half appliqued.
- **Other techniques** – (A one-person or two-person quilt) A quilt using a technique that does not fit into any of the other definitions. Wholecloth, redwork, hand embroidery, collage, yo-yos, cathedral window, and crazy quilts should be entered in this category. Quilts made from a simple printed panel, with or without a border, are considered wholecloth and belong in this category.
- **Non-judged** – Any quilt that is to be displayed but not judged. Any number of makers may be involved, and any technique may be used. Vintage quilts should be entered in this category.
- **Celebrate America 250!** – A quilt that represents the category theme of celebrating the 250th Anniversary of the Independence of the United States and expressing the makers love for our country (see Celebrate America 250! Category Information Packet). A quilt constructed, quilted, and bound by one or more person. A quilt that is more than 30” and less than or equal to 100” on the longest side. A

quilt made using any combination of the following techniques: machine piecing, hand piecing, wholecloth, red work, hand embroidery, digitized machine embroidery, hand applique, machine applique, flag designs, collage, and painting. Art, Modern, and Youth entries are welcome (see quilt entry information above).

Note on Quilt of Valor Entries: All Quilt of Valor quilts entered in Quilt Plano 2026 will be donated to the QGP Quilt of Valor Committee to be presented to an Active Duty or Veteran service member. Quilt of Valor Quilts will NOT have a sleeve attached.

In addition, two-sided quilts, miniature quilts, quilts made from pre-cut kits, clothing, soft sculpture, un-quilted tops, cheater blocks, tied quilts, and quilts made from printed panels may not be entered in the America 250! category. Quilts depicting current political issues or protest will not be accepted.

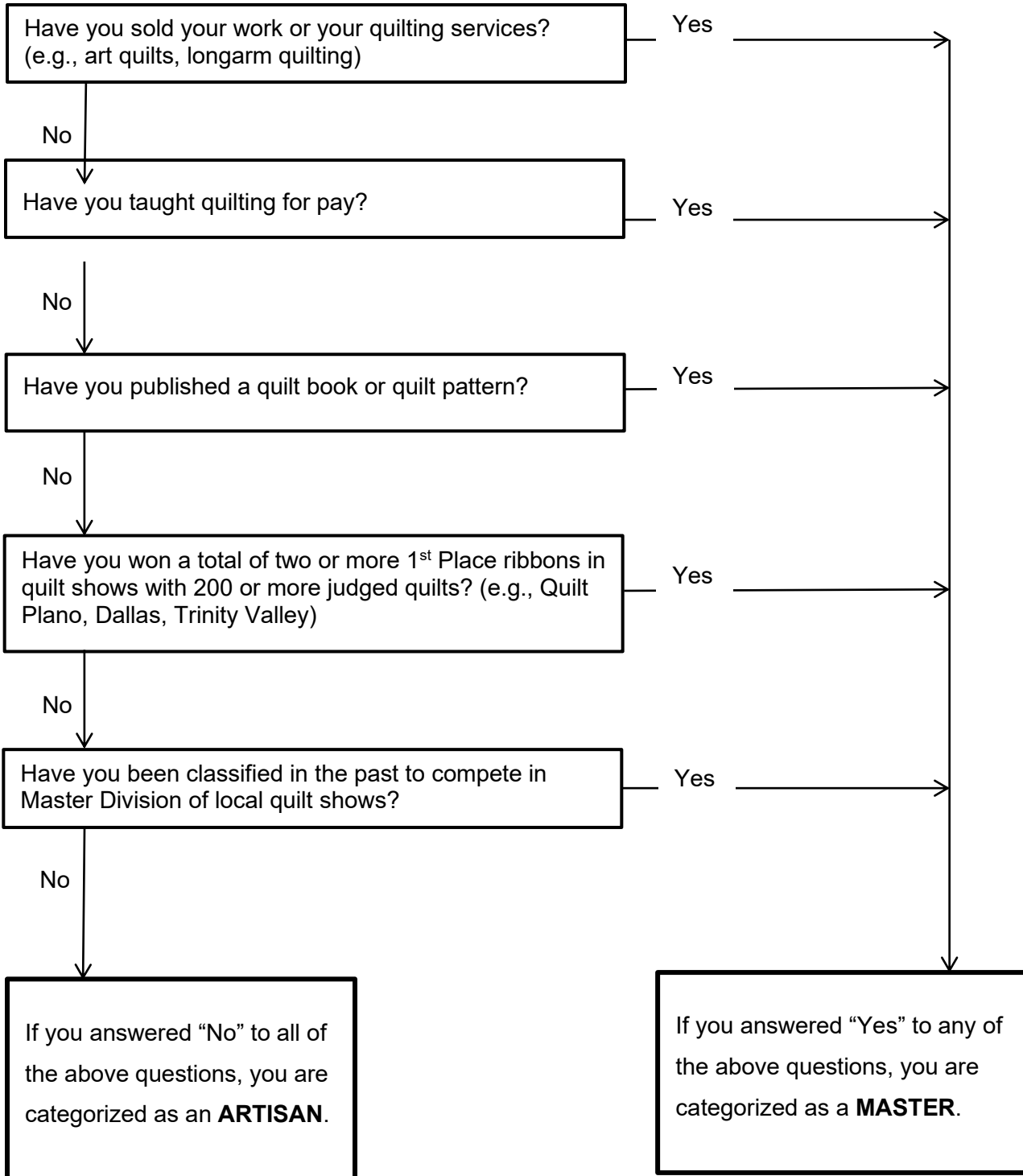
Important Dates:

- **Withdrawal Deadline** – If you determine that a quilt you have entered must be withdrawn, you **MUST** inform the registration chair of the withdrawal by phone or email **no later than July 24, 2026**. Any entrant withdrawing a quilt on or after **July 24, 2026** will not be allowed to enter next year's quilt show.
- **Turn-in** – Quilts are to be delivered to Plano Event Center on Tuesday, **August 11th**, between 8:00am and 1:00pm. If you cannot deliver your quilt at the designated time, consider having a friend drop it off, or you may ship your quilt to the registration chair ahead of time. Detailed delivery and shipping instructions will be provided by **email** in July.
- **Pick-up** – Quilts are to be picked up at the Plano Event Center on Saturday, **August 15th**, beginning at 6:00pm. No quilts will be released until all the quilts have been taken down and accounted for.

Notes on Copyright: Quilt Plano 2026 strongly discourages entering quilts that use any commonly recognized copyrighted visual images in the design unless the entrant provides written permission for the use of the visual image. Quilt Plano 2026 is not responsible for any copyright infringement of the entrant.

Are You an “Artisan” or a “Master”?

Use this flowchart to determine whether your entry belongs in a Master category or an Artisan category. The choice is determined by the eligibility of the “maker,” the person who constructed the quilt top. Open and Non-Judged categories are open to all entrants, regardless of Master or Artisan eligibility.



Categories: Choose the category that best describes your quilt.

101 – Master, One-Person, Pieced, Medium
102 – Master, One-Person, Pieced, Large
103 – Master, One-Person, Appliqued, Medium/Large
104 – Master, One/Two-Person, Mixed Techniques
105 – Master, Two-Person, Pieced, Medium
106 – Master, Two-Person, Pieced, Large
107 – Master, Two-Person, Appliqued, Medium
108 – Master, Two-Person, Appliqued, Large
109 – Master, Art Quilt

201 – Artisan, One-Person, Pieced, Medium
202 – Artisan, One-Person, Pieced, Large
203 – Artisan, One-Person, Appliqued, Medium/Large
204 – Artisan, One/Two-Person, Mixed Techniques
205 – Artisan, Two-Person, Pieced, Medium
206 – Artisan, Two-Person, Pieced, Large
207 – Artisan, Two-Person, Pieced, Extra Large
208 – Artisan, Two-Person, Appliqued, Medium
209 – Artisan, Two-Person, Appliqued, Large
210 – Artisan, Art Quilt
211 – Artisan, First Show Quilt by the Top Maker
212 – Artisan, Youth

301 – Open, Miniature
302 – Open, Small
303 – Open, Group, Medium/Large
305 – Open, Digitized, Small/Medium
306 – Open, Digitized, Large
307 – Open, Other Techniques
308 – Open, Modern Quilt

400 – Open, Non-judged

500 - Master, Artisan, Youth, America 250!
501 - Master, Artisan, Youth, America 250! Quilt of Valor

The Show Committee reserves the right to determine the correct category for a quilt and to re-organize the categories to facilitate judging.

Size guidelines:

(See definitions on page 2 for details.)

<= 24" – Miniature (restrictions apply)

<= 30" – Small

<= 72" – Medium

> 72" – Large

Entrants will receive delivery/shipping instructions and registration materials by **email** in July.

For questions, additional information, or shipping instructions, please call or email

Show Entries Chair – Tisha Harms showregistration@ggplano.org or tisha.harms@gmail.com or 214-316-5066 (cell).